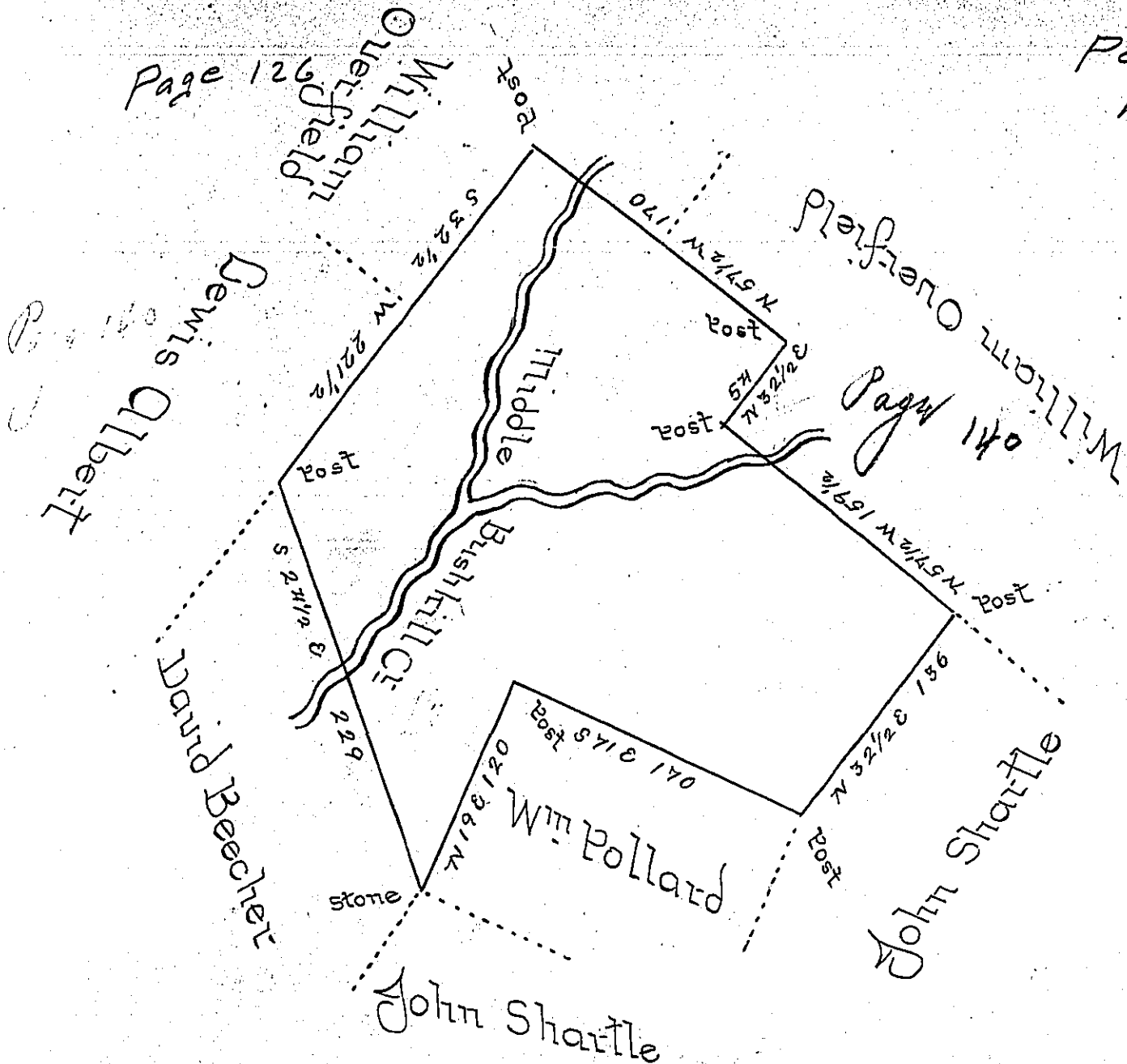


Porter —
PIKE

Page 126



By Virtue of a Warrant dated the 23^d day of July 1844 Surveyed the 20th day of March 1845 to William Overfield the above described Tract of Land situate in Bethman Township Pike County embracing the junction of the outlet of Middle Pond with the Middle Bushkill Creek and lands on both sides of said Creek containing four hundred twenty seven Acres one hundred & twenty three perches & Allowance of six p^{ct} for Roads &c.

To Jacob Sallade Esq. }
Surveyor General of Penna.

J. H. Wallace U.S.

Examined and Approved by me
To John Laporte Esq. }
Surveyor General of Penna.

John N. Cross U.S.

IN TESTIMONY that the above is a copy of the original remaining on file in the Department of Internal Affairs of Pennsylvania, made conformably to an Act of Assembly approved the 16th day of February, 1833, I have hereunto set my Hand and caused the Seal of said Department to be affixed at Harrisburg, this first day of May 1900.

James W. Latta
Secretary of Internal Affairs.